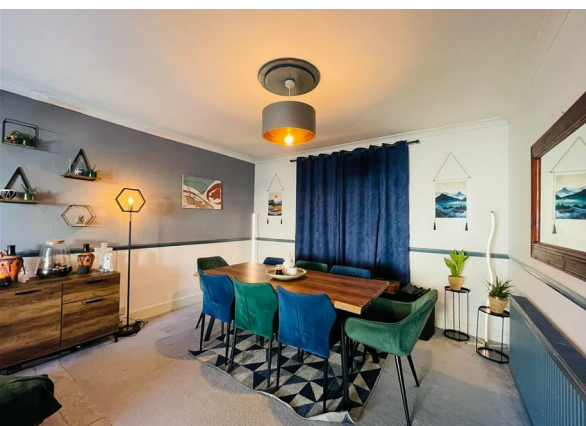
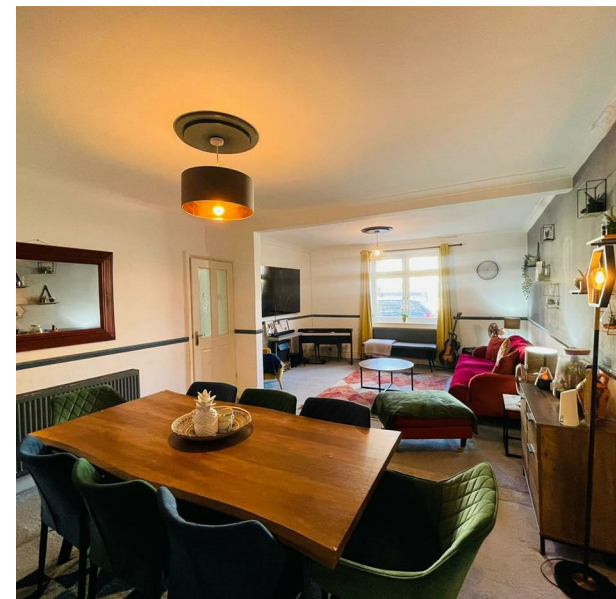


185 Winns Avenue, London, Greater London, E17 5HB  
Price Guide £750,000

COMPLETION  
SALES & LETTINGS





185 Winns Avenue, London, Greater London, E17 5HB

Price Guide £750,000

Council Tax Band: C

Nestled in the charming area of Winns Avenue, London, this delightful terraced house offers a perfect blend of comfort and convenience. With three well-proportioned bedrooms, this property is ideal for families or those seeking extra space. The house features a welcoming reception room, perfect for entertaining guests or enjoying quiet evenings at home.

One of the standout features of this property is its large garden, providing a wonderful outdoor space for relaxation, gardening, or children's play. The garden is a rare find in urban settings, making it a true gem for those who appreciate nature and outdoor living.

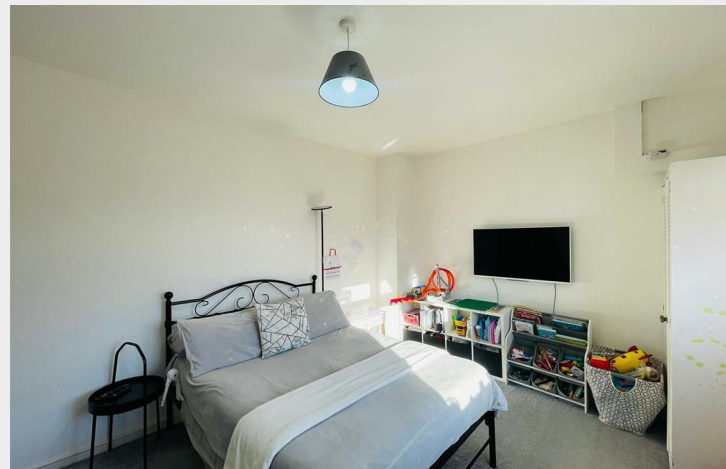
The location is simply excellent, situated within close proximity to Lloyds Park, which offers a variety of recreational activities and green spaces for leisurely strolls or picnics. Additionally, the property is within walking distance to the local station, ensuring easy access to public transport and the wider city.















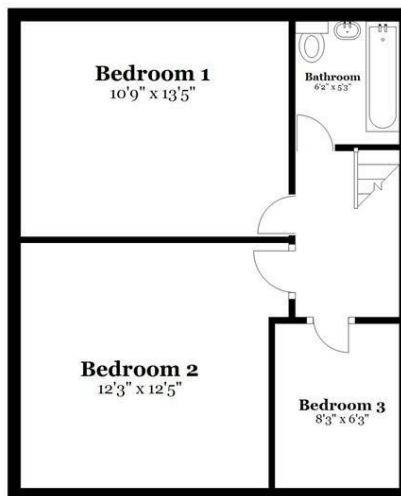
### Ground Floor

Approx. 700.5 sq. feet



### First Floor

Approx. 442.8 sq. feet



Total area: approx. 1143.3 sq. feet

337 Forest Road

London

E17 5JR

02085277007

enquiries@completion.co.uk

completion.co.uk

Energy Efficiency Rating		
	Current	Potential
Very energy efficient - lower running costs		
(92 plus) <b>A</b>		
(81-91) <b>B</b>		
(69-80) <b>C</b>		
(55-68) <b>D</b>		
(39-54) <b>E</b>		
(21-38) <b>F</b>		
(1-20) <b>G</b>		
Not energy efficient - higher running costs		
England & Wales <span>EU Directive 2002/91/EC</span>		